

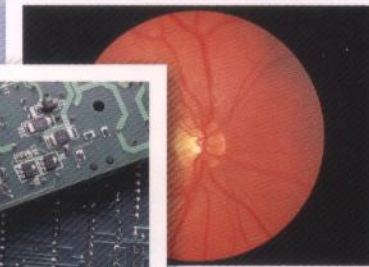
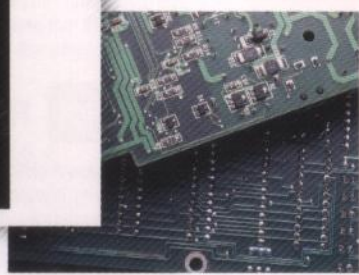
MODEL

CP900DW

NEW



Medical

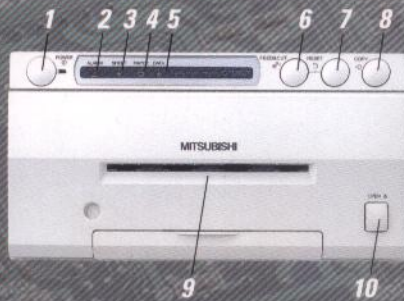


Industry

*A New Era in Digital Printing
Mitsubishi Electric Digital Printer
Clear Photographic Quality Prints
in a Matter of Seconds*



Front Panel



Rear Panel



1. Power button 2. Alarm lamp 3. Sheet lamp 4. Paper lamp 5. Data lamp 6. Paper feed & Cut button 7. Reset button
8. Copy button 9. Print outlet 10. Open button 11. Remote terminal 12. Mode switches 13. USB port connector 14. AC line socket

Fast Print

Rapid response with high-speed printing—takes just 12 seconds. (using CK900S)

High-speed printing through a new roll mechanism: The CP900DW uses a new straight paper path that simplifies the paper feed mechanism. This printer can print an S-size picture at an extremely high speed—just 12 second—bringing an even speedier response to the medical scene.

Absolute Precision

Sublimation thermal transfer method: Uses a sublimation thermal transfer method that smoothly reproduces 16.7 million colors, from full color to intermediate color.

New built-in 325 dpi thermal head: Uses a 325 dpi high-density, high-efficiency head. Reproduces images obtained by medical imaging equipment in even sharper detail.

Greatly enhanced media whiteness: To maximize the CP900DW's high picture quality, a new paper with enhanced whiteness is provided.

Other features: The main unit is about 30% lighter than the previous model (CP770DW), weighing in at a mere 11kg. Uses a built-in paper tray that can be pulled out for use during printing.

Specifications

Color print system	Dye sublimation thermal transfer
Paper size / Image size (mm)	S print 110×105 / 100×75 L print 162×110 / 130×100
Cartridge type	3 colors (yellow, magenta, cyan) and protective layer dye sublimation type
Pixel density	325 dpi (dot per inch)
Resolution	S print 1,280×960 dots L print 1,676×1,280 dots
Gradation	256 levels of Y, M, C
Image memory	8MB
Printing time	S print about 12 sec. (Fast mode) / 20 sec. (Fine mode) L print about 18 sec. (Fast mode) / 32 sec. (Fine mode)

Options

Model name	Specifications
CK900S	Standard paper / S size Ink sheet (200 sheets)
CK900L	Standard paper / L size Ink sheet (130 sheets)
CK900S4P	Surface-coated paper / S size Ink sheet (130 sheets)
CK900L4P	Surface-coated paper / L size Ink sheet (90 sheets)
PKC900S (200 sheets)	Standard paper / Ink cassette with S size Ink sheet
PKC900L (130 sheets)	Standard paper / Ink cassette with L size Ink sheet

Simple Operation

Both paper loading and Operation are easy.

Straight paper path for simple media installation: The new roll mechanism's Semi-automatic paper feed makes installation of media even simpler. Just set the media in the prescribed position, and the paper feeds automatically.

Easy front access: With front slide and top access, paper loading and maintenance are extremely simple. Just pull out the front part to load media and other consumables from above.

Highly reliable roll paper system: Mitsubishi provides the highest reliability and quality with our roll paper system. By allowing no paper jams and a high-capacity print roll, we provide the prints that are necessary during critical applications. Doctors will have less downtime when they need a printout the most.

Many Functions

Fully equipped with many functions.

Newly developed color imaging control system: Each ink sheet cassette has a built-in Color Imaging Control Chip. The printer uses individual media data from this chip to control color development properties. As a result, the CP900DW delivers high-grade printing with even more stable picture quality.

Monitoring of remaining amount of ink sheets: A Color Imaging Control Chip monitors the amount of remaining ink sheets.

Large-capacity, 8MB frame memory: Equipped with a built-in, large-capacity 8MB frame memory.

Application OS	Windows® 98/Me/2000/XP
Interface	USB Ver. 1.1
Power	Input voltage AC 120V, 50/60Hz, 1.4A (during printing), 0.2A (stand-by) AC 220-240V, 50/60Hz, 0.7A (during printing), 0.1A (stand-by)
Dimensions (mm)	280 (W)×400 (D)×150 (H)
Weight (kg)	Approx. 11kg
Compliance	UL 2601-1, CE (LVD, MDD)
Accessories	1) Operation manual 2) Power cord (AC120V Hospital grade type and AC220-240V type) 3) Ink sheet cassette 4) Driver software for Windows® XP/2000/Me/98 5) Spacer (4 pcs)

Windows® is a registered trademark of Microsoft Corp., USA. Company names and products listed in this catalog are trademarks or registered trademarks of individual companies.