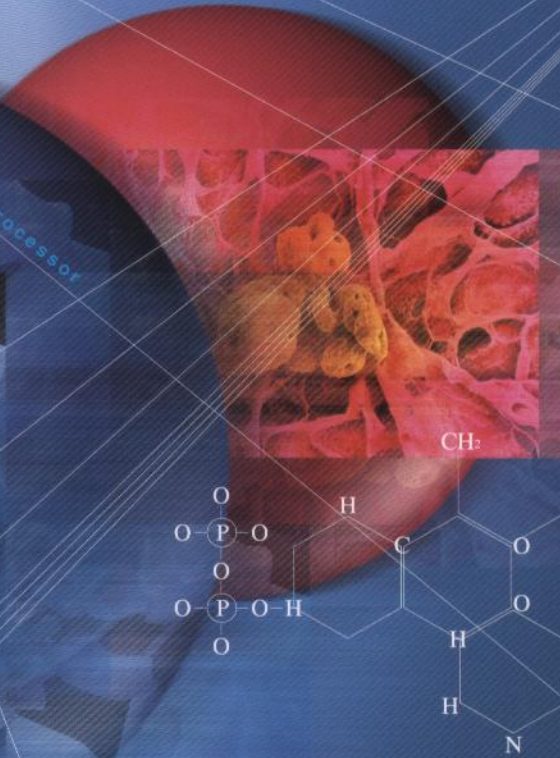


# Video Copy Processor

# CP900UM



**Introducing a high-speed medical/industrial printer  
capable of printing detail images  
in just 10 seconds\***



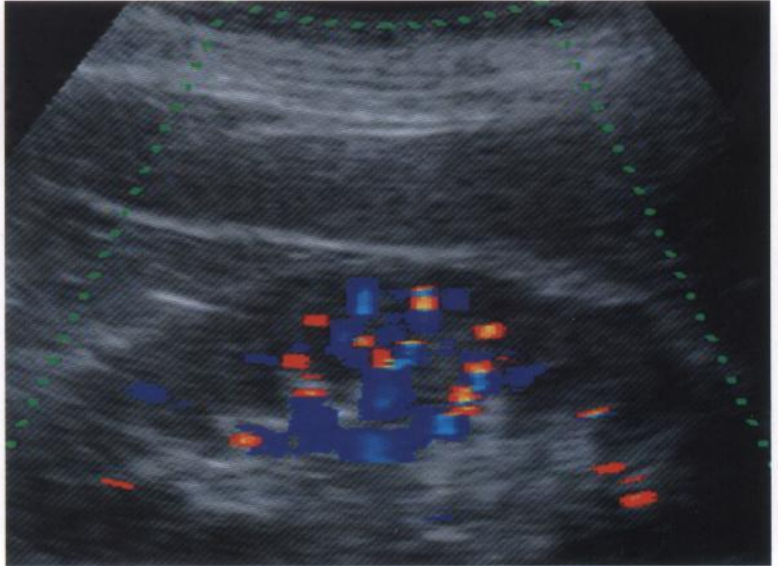
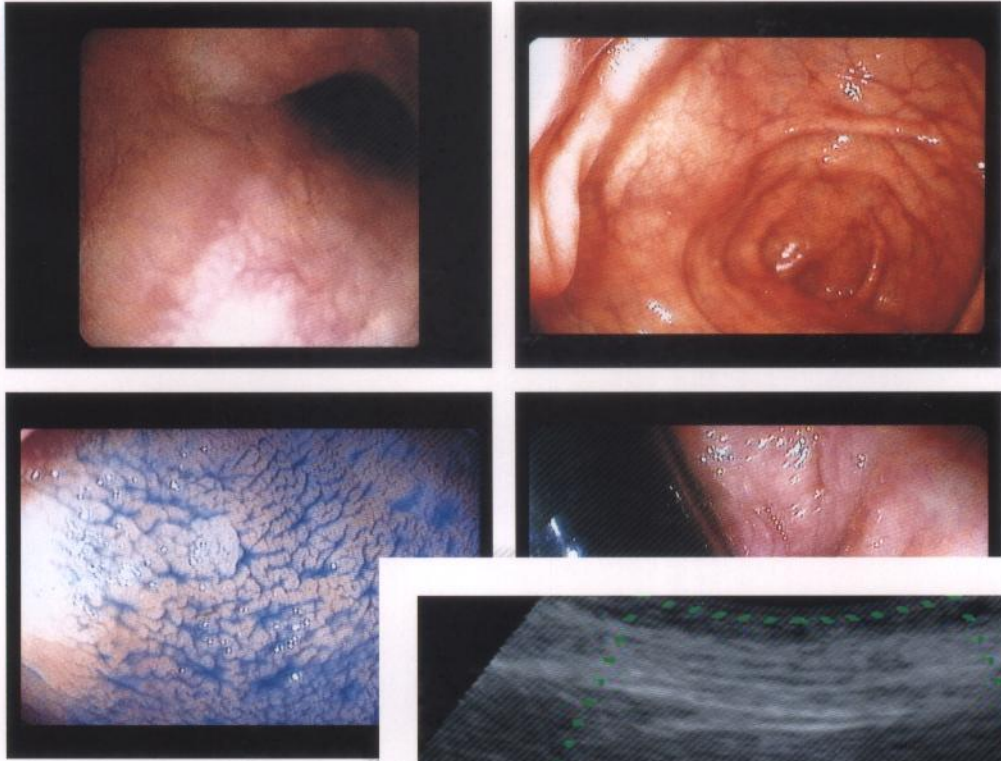
**A6 roll paper system video printer**





Delivering the Quality and Speed, doctors and

Paper size  
L size 110X160mm



Paper size  
S size 105X110mm



**CP900UM**  
MITSUBISHI VIDEO COPY PROCESSOR



# researchers require; in 10-seconds printing.

## Color Imaging Control

### High picture quality performance further enhanced through Mitsubishi's new system.

**Newly developed color imaging control system** Each ink sheet cassette has a built-in Color Imaging Control Chip. The printer uses individual media data from this chip to control color development properties. As a result, the CP900UM delivers high-grade printing with even more stable picture quality.

**Monitoring of remaining amount of ink sheets** A Color Imaging Control Chip monitors the amount of remaining ink sheets.



Color Imaging Control Chip

## Absolute Precision

### High-quality prints. Detailed and vivid.

**Sublimation thermal transfer method** Uses a sublimation thermal transfer method that smoothly reproduces 16.7 million colors, from full color to intermediate color.

**New built-in 325-dpi thermal head** Uses a 325-dpi high-density, high-efficiency head. Reproduces images obtained by medical imaging equipment in even sharper detail.

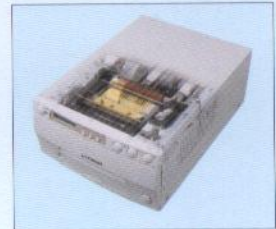
**Greatly enhanced media whiteness** To maximize the CP900UM's high picture quality, a new paper with enhanced whiteness is provided.

## Fast Print

### Rapid response with high-speed printing—takes just 10 seconds\*.

#### High-speed printing through a new roll mechanism

The CP900UM uses a new straight paper path that simplifies the paper feed mechanism. This printer can print an S-size picture at an extremely high speed—just 10 seconds—bringing an even speedier response to the medical scene.



Straight paper path

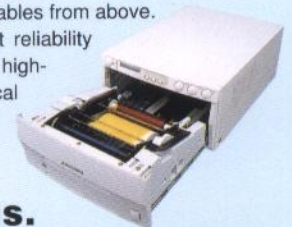
## Simple Operation

### Both paper loading and Operation are easy.

**Straight paper path for simple media installation** The new roll mechanism's Semi-automatic paper feed makes installation of media even simpler. Just set the media in the prescribed position, and the paper feeds automatically.

**Easy front access** With front slide and top access, paper loading and maintenance are extremely simple. Just pull out the front part to load media and other consumables from above.

**Highly reliable roll paper system** Mitsubishi provides the highest reliability and quality with our roll paper system. By allowing no paper jams and a high-capacity print roll, we provide the prints that are necessary during critical applications. Doctors will have less downtime when they need a printout the most.



## Many Functions

### Fully equipped with many functions.

**Various print modes** Allows multi-printing of 2, 4, or 16 copies of the same screen or of different screens. Enables selection of print mode according to different examinations and analyses, including photograph-size prints of dimensions 1.5×2cm, 3×4cm, and 5×5cm.

**Large-capacity, 8-MB frame memory** Equipped with a built-in, large-capacity 8-MB frame memory that memorizes the next printing image during printing and supports high-speed printing. This memory holds up to four images.

**Optimum functions for the medical field** Loaded with three types of  $\gamma$ -curve for compatibility with various types of medical equipment, including ultrasonic diagnostic equipment, endoscopes, and microscopes. User customizable, and equipped with a function that synchronizes the CP900UM to the strobe light of retinal camera systems. Compatible with RS-232C and foot switch operation.

#### [Other features]

The main unit is about 30% lighter than the previous model (CP700UM), weighing in at a mere 11kg.

Uses a built-in paper tray that can be pulled out for use during printing.

Comprehensive input terminal group with composite video, S image, and RGB analogue.



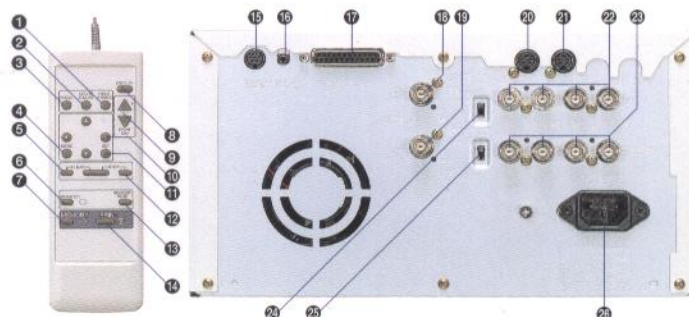
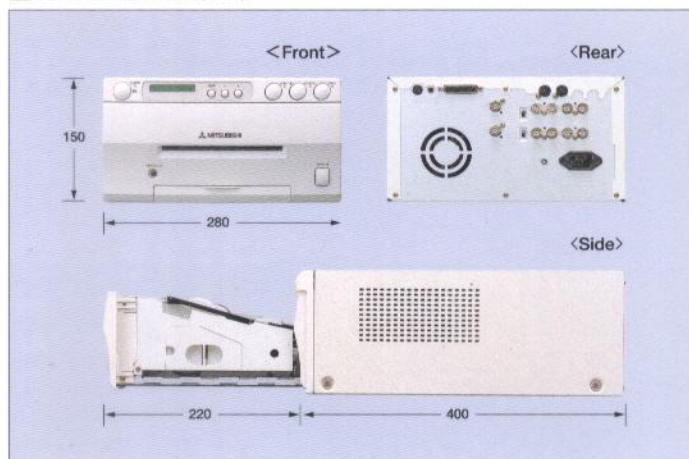
## ■ Specification

<b>Model name</b>	<b>CP900UM</b>
Print method	Sublimation thermal transfer method
Number of gradations	256 per color
Display colors	16.7 million
Print paper	Roll paper
Head resolution	325 DPI (1280 dots)
Paper size (mm)	S size: 105×110 (4.1×4.3 inch) L size: 110×160 (4.3×6.2 inch)
Print size (mm)	S size: 75×100 (2.9×3.9 inch) L size: 97.5×130 (3.8×5.1 inch)
Print resolution (dot)	S size: 1280×500 L size: 1280×1250
*Print time (sec)	S size: Approx. 10 sec (3P) L size: Approx. 20 sec (3P)
Paper magazine capacity	S size: 200 (3P) / 130 (4P) L size: 130 (3P) / 90 (4P)
Dimensions (mm)	280 (W) × 400 (D) × 150 (H) (11.1×15.8×6.0 inch)
Weight	Approx. 11kg
Power supply	AC120V 60Hz
Power consumption	Approx. 2.1A (25°C Full black) / Approx. 1.7A (25°C Full black) : Lower consumption
Memory	8 MB, 4-frame memory
Interface	RGB/S-Video/Composite video, RS-232C Control
Colour pre-set function	3 types of $\gamma$ -curve, compatible with endoscopes, ultrasonic diagnostic equipment, and microscopes
Strobe synchronization	Strobe light synchronization for retinal camera systems
Compliance	UL/C-UL2601-1, UL/C-UL1950 FCC class A, ICES-003 class A
Paper tray	Built into main unit

## ■ Options

Model name	Specifications
CK900S	Standard paper / S size Ink sheet (200 sheets)
CK900L	Standard paper / L size Ink sheet (130 sheets)
CK900S4P	Surface-coated paper / S size Ink sheet (130 sheets)
CK900L4P	Surface-coated paper / L size Ink sheet (90 sheets)
PKC900S(200sheets)	Standard Paper / Ink Cassette with S size Ink sheet
PKC900L(130sheets)	Standard Paper / Ink Cassette with L size Ink sheet

## ■ Dimensions (mm)



- ① Field/frame button ② Image adjustment button ③ Program button ④ Menu button  
 ⑤ Clear button ⑥ Monitor button ⑦ Memory button ⑧ Display button ⑨ Print sheet number button  
 ⑩ Shift button ⑪ Set button ⑫ Stop button ⑬ Memory page button ⑭ Print button  
 ⑮ External remote ⑯ Remote connector (Stereo mini Jack) ⑰ RS-232C ⑱ Composite video input socket  
 ⑲ Composite video output socket ⑳ S video input socket ㉑ S video output socket  
 ㉒ RGB analogue input socket ㉓ RGB analogue output socket ㉔ RGB analogue signal impedance switch  
 ㉕ Synchronization signal impedance switch ㉖ Power socket

**MITSUBISHI ELECTRIC CORPORATION**

HEAD OFFICE: OFFICE TOWER Z 14F, 1-8-12 HARUMI, CHUO-KU, TOKYO 104-6214, JAPAN