
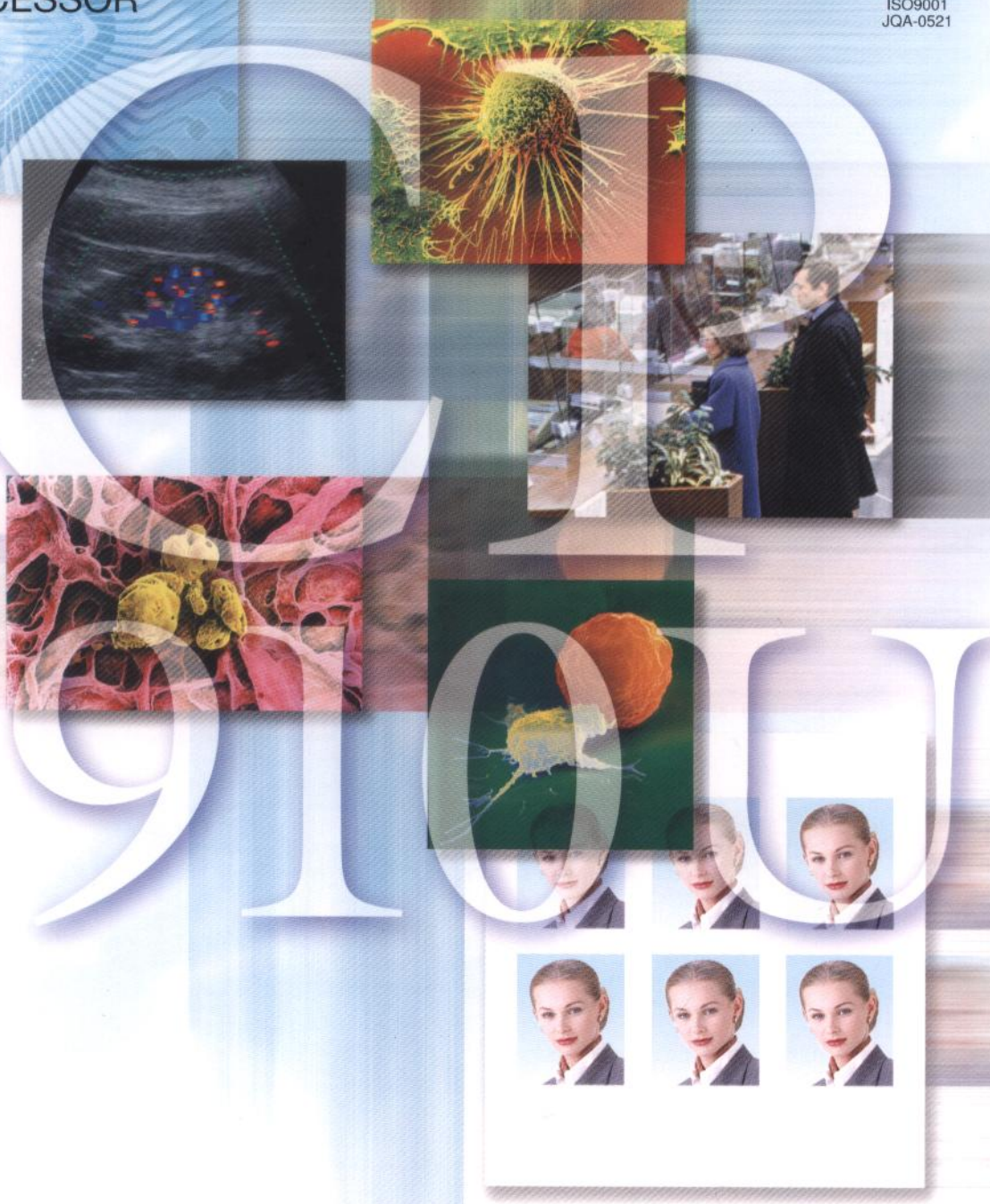


Changes for the Better

 **MITSUBISHI
ELECTRIC**
VIDEO COPY PROCESSOR


CERTIFIED
JQA
MANAGEMENT SYSTEM
QUALITY SYSTEM
ISO9001
JQA-0521

Video
Copy
Processor



Super sharp photo quality printing in just 10 seconds*
New high-speed A6 color printer



Video Copy Processor
CP910U

Color Video printer with roll paper system exclusively for video signals



The CP910U's new high picture quality system delivers clear pictures every time.

Newly developed color imaging control system

Each ink sheet cassette has a built-in Color Imaging Control Chip. The printer uses individual media data from this chip to control color development properties. As a result, the CP910U delivers high-grade printing with even more stable picture quality.



Monitoring of remaining amount of ink sheets

A Color Imaging Control Chip monitors the amount of remaining ink sheets.

Sharp reproduction of both people and precision machinery.

New built-in 325-dpi thermal head

Uses a 325-dpi high density, high-efficiency head. Reproduces both passport- and image-analysis photos with exceptional clarity.

Greatly enhanced media whiteness

To maximize the CP910U's high picture quality, a new paper with enhanced whiteness is provided.

High-speed, instantaneous response printing in 10 seconds* flat.

High-speed printing through a new roll mechanism

A hectic business world demands speedy response from a printer. The CP910U is one printer that demonstrates its strengths in no uncertain terms. The CP910U's new straight paper path simplifies and speeds up the paper feeding mechanism. Prints S size at the dazzling speed of just 10 seconds.



Straight paper path

Simple operation geared for hard use.

Straight paper path for simple media installation

The new roll mechanism's semi-automatic paper feed makes installation of media even simpler. Just set the media in the prescribed position, and the paper feeds automatically.

Easy front access

With front slide and top access, paper loading and maintenance are extremely simple. Just pull out the front part to load media and other consumables from above.

Highly reliable roll paper system

Mitsubishi's roll paper system provides high reliability through such features as significantly reduced incidence of paper jams and high-capacity printing, which eliminates the need for troublesome media replacement.



Many functions—ideal for business applications.

Various print modes

Allows multi-printing of 2, 4, or 16 copies of the same screen or of different screens. Ready for different business needs—with various print modes, including photo size prints measuring 1.5×2cm, 3×4cm, and 5×5cm.

Large capacity, 8-MB frame memory

Equipped with a built-in, large-capacity 8-MB frame memory that memorizes the next printing image during printing and supports high-speed printing. This memory holds up to four images.

Other features

- ◎The main unit is about 30% lighter than the previous model (CP710U), weighing in at a mere 11kg.
- ◎Uses a built-in paper tray that can be pulled out for use during printing.
- ◎Simple connection to video tape recorders using video cable.

Paper size
L size
110×160mm

Mitsubishi—for "Super-fine in 10 sec Meeting the professional's needs wit



CP910U

MITSUBISHI VIDEO COPY PROCESSOR

Highly effective in a wide variety of fields.

Security field
Image printing for monitoring and security cameras for banks and convenience stores.

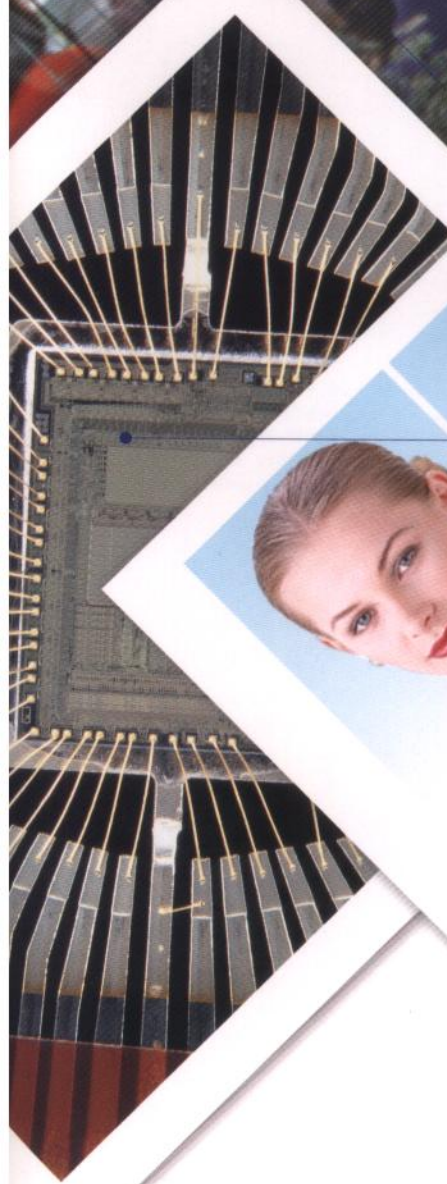
Image analysis field
For industrial printing inspection and analysis from microscope and similar hardware equipment.

Passport photo business
Ideal for self-service photo ID and passport photo application.



Paper size
S size
105x110mm

onds"
h its speed, clarity, and ease of use.



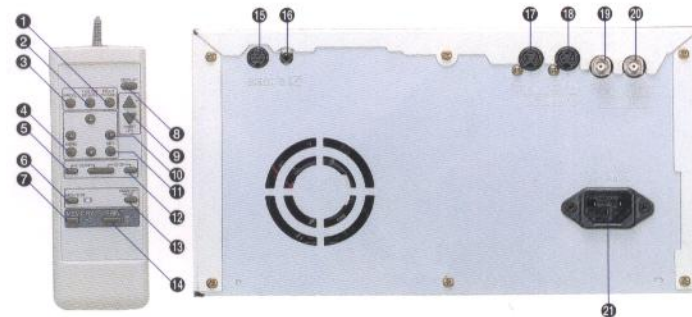
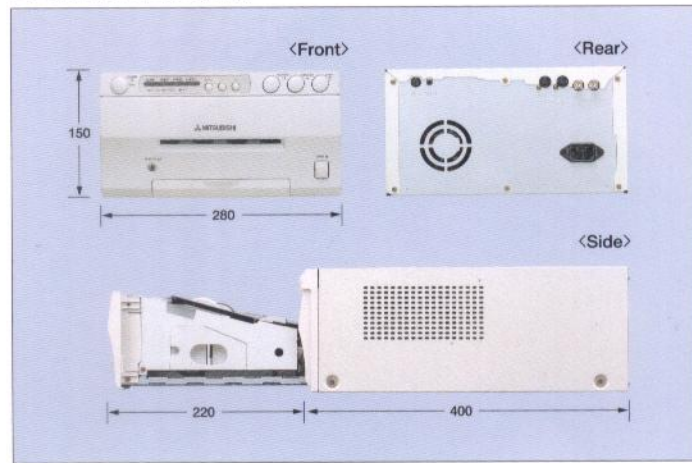
■ Specification

Model name	CP910U
Print method	Sublimation thermal transfer method
Number of gradations	256 per color
Display colors	16.7 million
Print paper	Roll paper
Head resolution	325 DPI (1280 dots)
Paper size (mm)	S size: 105×110 (4.1×4.3 inch)
	L size: 110×160 (4.3×6.2 inch)
Print size (mm)	S size: 75×100 (2.9×3.9 inch)
	L size: 97.5×130 (3.8×5.1 inch)
Print resolution (dot)	S size: 1280×500
	L size: 1280×1250
*Print time (sec)	S size: Approx. 10 sec (3P)
	L size: Approx. 20 sec (3P)
Paper magazine capacity	S size: 200 (3P) / 130 (4P)
	L size: 130 (3P) / 90 (4P)
Dimensions (mm)	280 (W) × 400 (D) × 150 (H) (11.1×15.8×6.0 inch)
Weight	Approx. 11kg
Power supply	AC120V 60Hz
Power consumption	Approx. 2.1A (25°C Full black) / Approx. 1.7A (25°C Full black) : Lower consumption
Memory	8 MB, 4-frame memory
Interface	S-Video/Composite video
Compliance	UL/C-UL1950 FCC class A, ICES-003 class A
Paper tray	Built into main unit

■ Options

Model name	Specifications
CK900S	Standard paper / S size Ink sheet (200 sheets)
CK900L	Standard paper / L size Ink sheet (130 sheets)
CK900S4P	Surface-coated paper / S size Ink sheet (130 sheets)
CK900L4P	Surface-coated paper / L size Ink sheet (90 sheets)
PKC900S(200sheets)	Standard Paper / Ink Cassette with S size Ink sheet
PKC900L(130sheets)	Standard Paper / Ink Cassette with L size Ink sheet

■ Dimensions (mm)



- ①Field/Frame button ②Image adjustment button ③Program button ④Menu button
 ⑤Clear button ⑥Monitor button ⑦Memory button ⑧Display button ⑨Print sheet
 number button ⑩Shift button ⑪Set button ⑫Stop button ⑬Memory page button ⑭Print
 button ⑮External remote ⑯Remote connector (Stereo mini Jack) ⑰S video input
 socket ⑱S video output socket ⑲Composite video input socket ⑳Composite video
 output socket ㉑Power socket